

# Achievement Gap Advisory Panel

## Presentation

G. Glass

March 10, 2014



Achievement



## MPS Enrollment Data 2013-2014

<b>WHITE</b>	<b>BLACK</b>	<b>HISPANIC</b>	<b>AMER. Ind.</b>	<b>ASIAN P/I</b>
51%	32%	10%	0%	7%

**Special Education**

**17% of Total  
Population**

### **Standardized Test Data**

- NJASK , HSPA and Average SAT Scores
- Benchmark Data for Literacy & Math for K-5
- Reading levels for Kindergartners & GR3
- AP Scores
- College Board Report on SAT Readiness/College & Career Readiness Benchmarks/Pathway Benchmarks for College & Career Readiness

### **Opportunity to Learn Data**

- Special Education referral rates
- AP Course Enrollment
- In-school & Out-of-School Suspension Rates
- Enrollment & pass rates across all levels of Algebra
- Number of 8<sup>th</sup> graders taking & passing Algebra

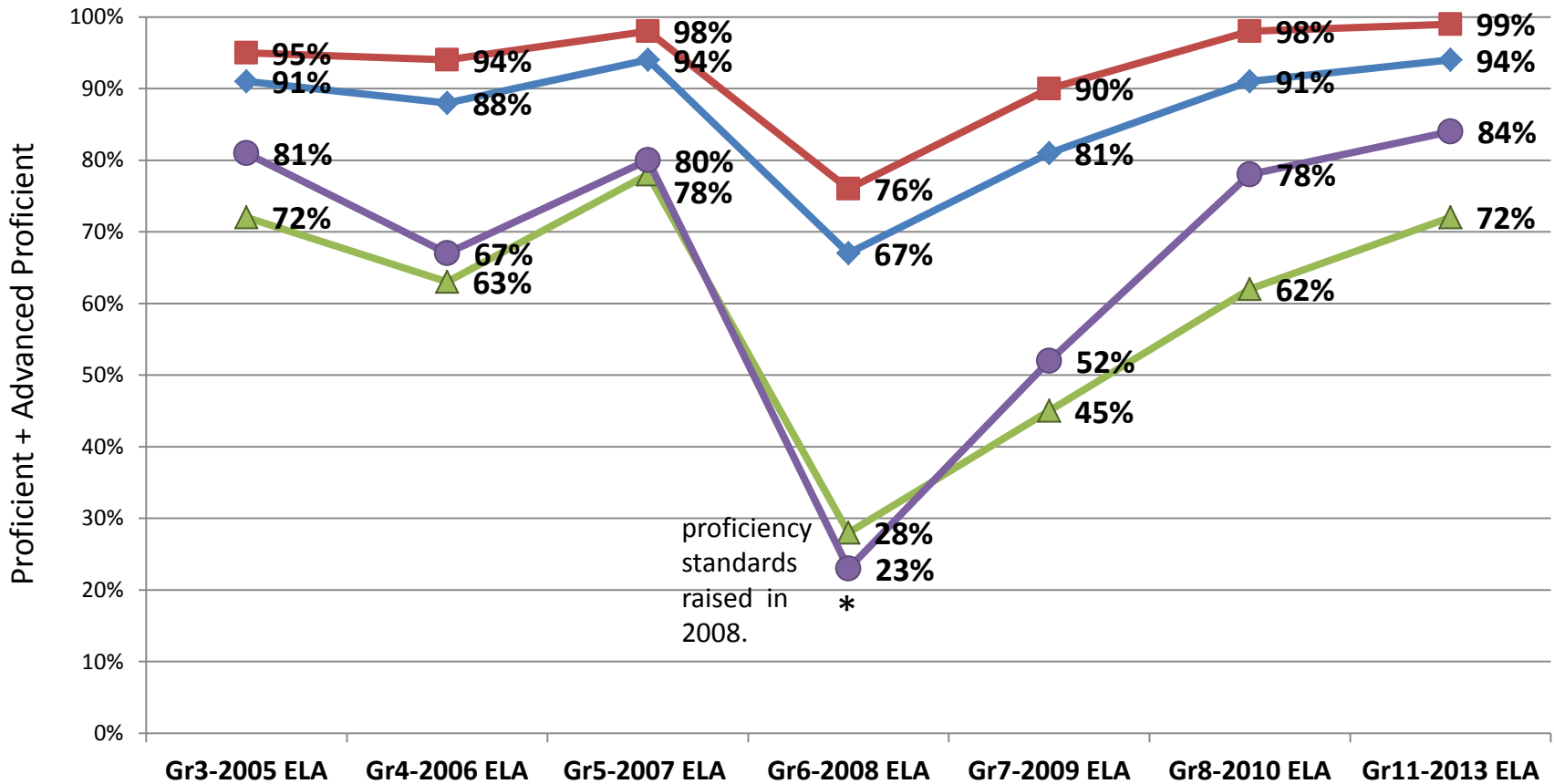
### **MPS Academic Levels/Magnets/SLC Data**

- Enrollment & pass rates across Magnets & MHS Small Learning Communities
- Enrollment & pass rates across leveled classes

*Special Thanks to Kaili Baucum*

# Class of 2014 – ELA Groups

## Current Seniors



Number of  
Valid Scores:

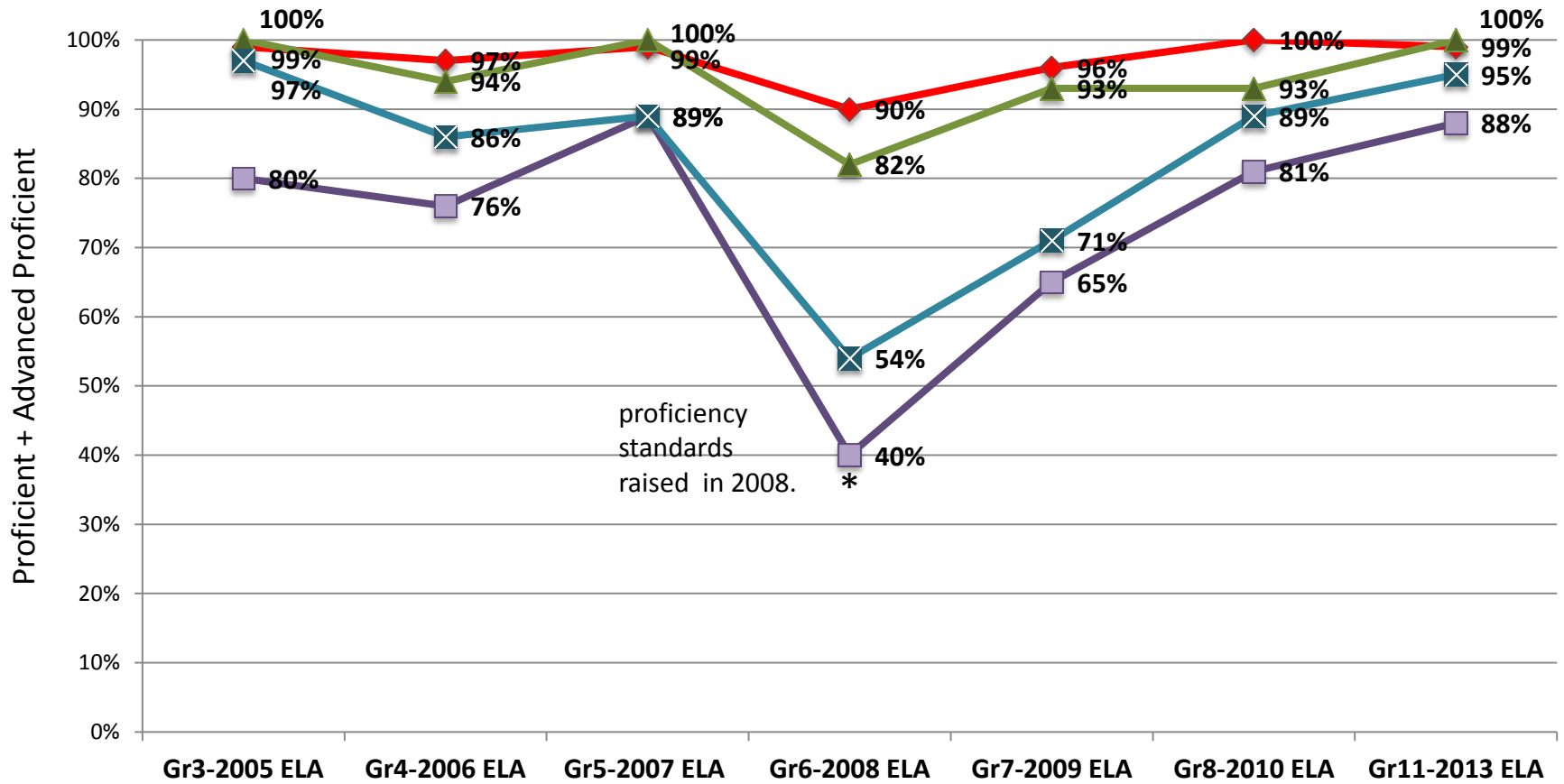
◆ Total (548,530,531,516,526,522,501)  
▲ Sp Ed (83, 93, 104, 91, 94, 91, 87)

■ Gen Ed (464,435,424,421,430,428,414)  
● Low SES (73, 79, 95, 86, 79, 96, 96)

\* NJASK prof. standards raised for grades 5,6,7

# Class of 2014 – ELA Eth/Race

## Current Seniors

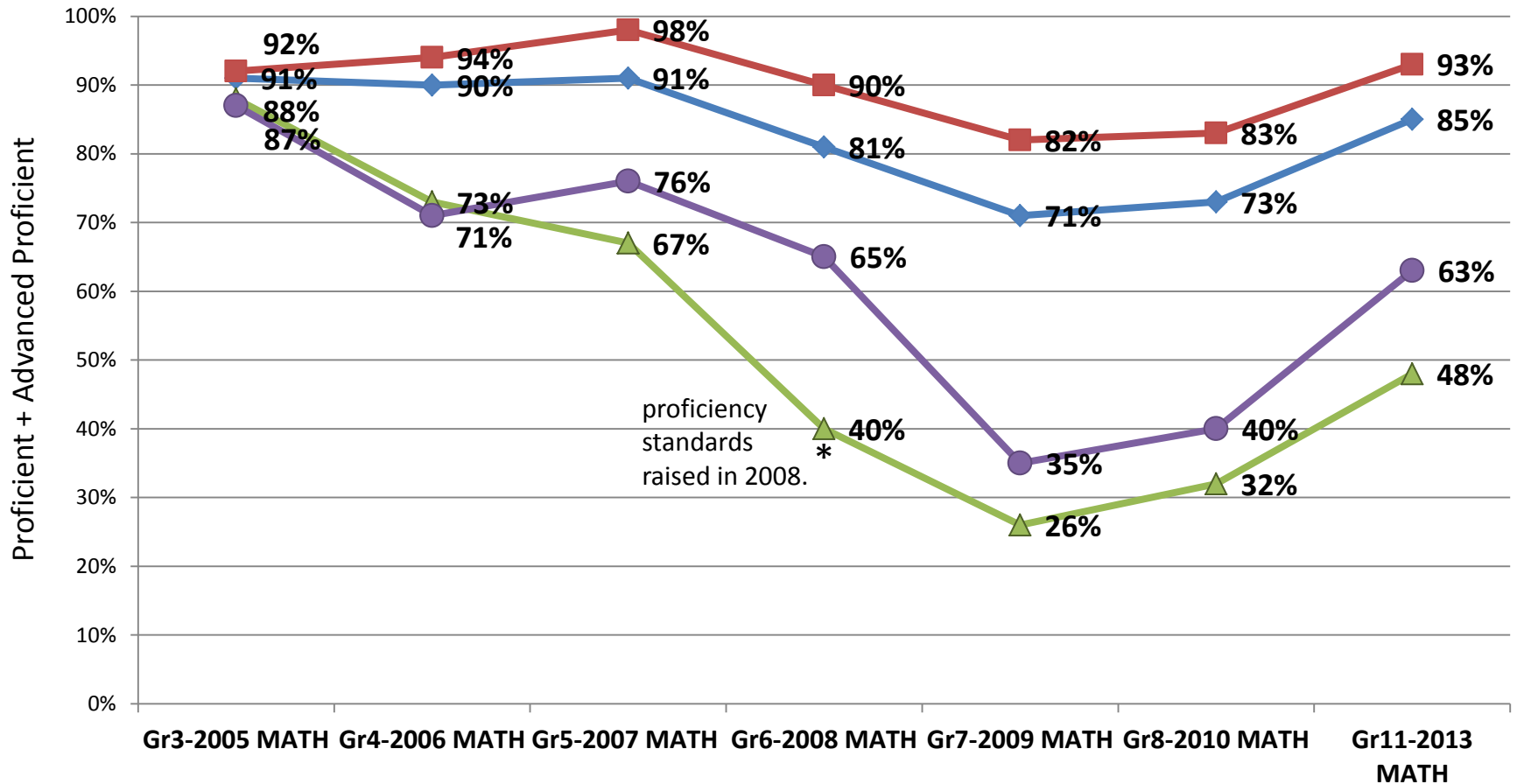


Number of Valid Scores:   
 White (268,264,263,246,244,245,237)   
 Asian (30, 32, 28, 28, 28, 30, 28)   
 Afr Am (211,202,203,202,213,209,197)   
 Hisp (36, 36, 38, 39, 41, 38, 39)

\* NJASK prof. standards raised for grades 5,6,7

# Class of 2014 – MATH Groups

## Current Seniors



Number of  
Valid Scores:

◆ Total (552,536,535,517,529,523,498)

▲ Sp Ed (84, 96, 105, 92, 94, 91, 86)

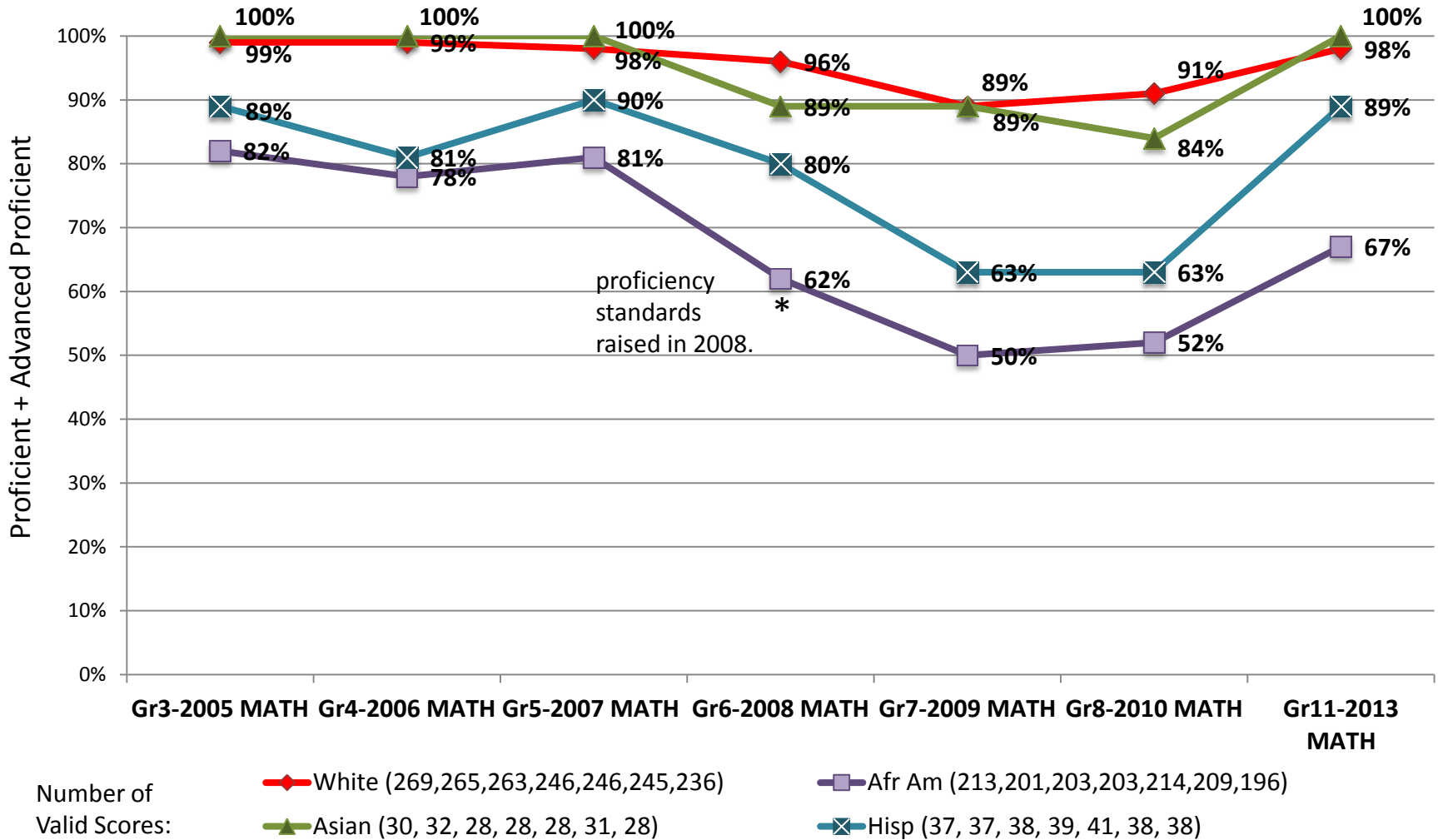
■ Gen Ed (465,436,424,421,430,428,412)

● Low SES (74, 83, 96, 86, 80, 96, 94)

\* NJASK prof. standards raised for grades 5,6,7

# Class of 2014 – MATH Eth/Race

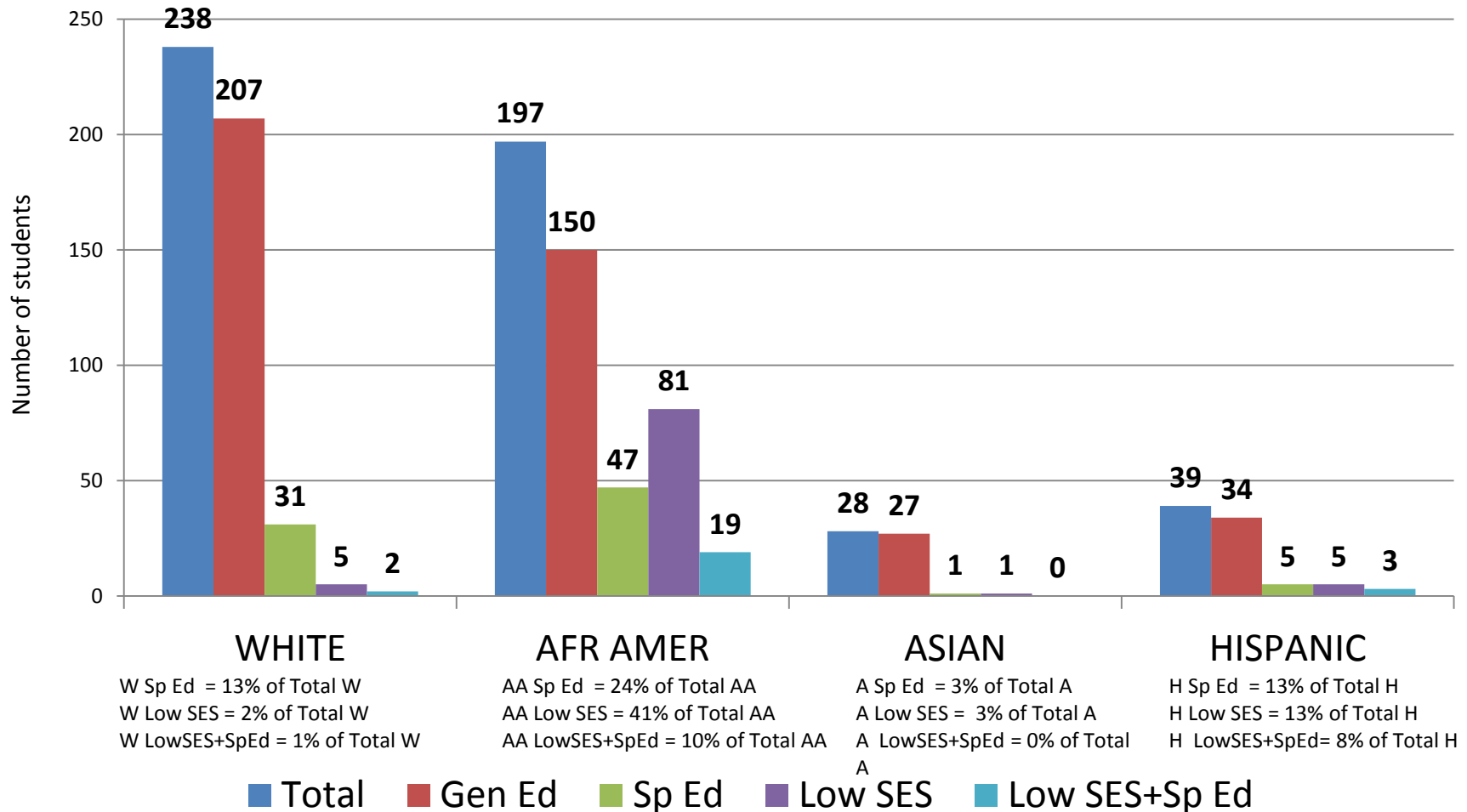
## Current Seniors



\* NJASK prof. standards raised for grades 5,6,7

# Class of 2014 By Race/Group

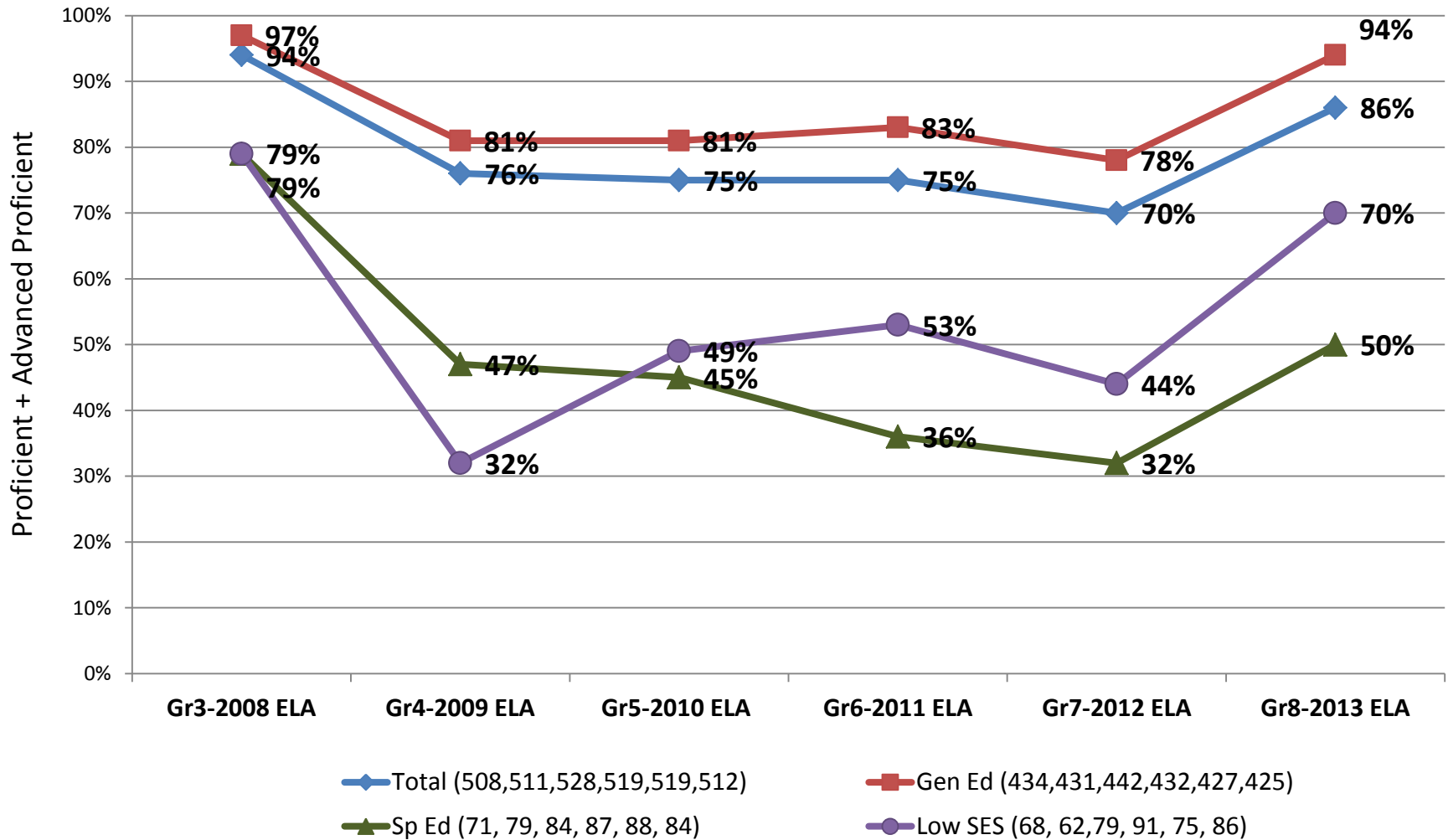
## Current Seniors





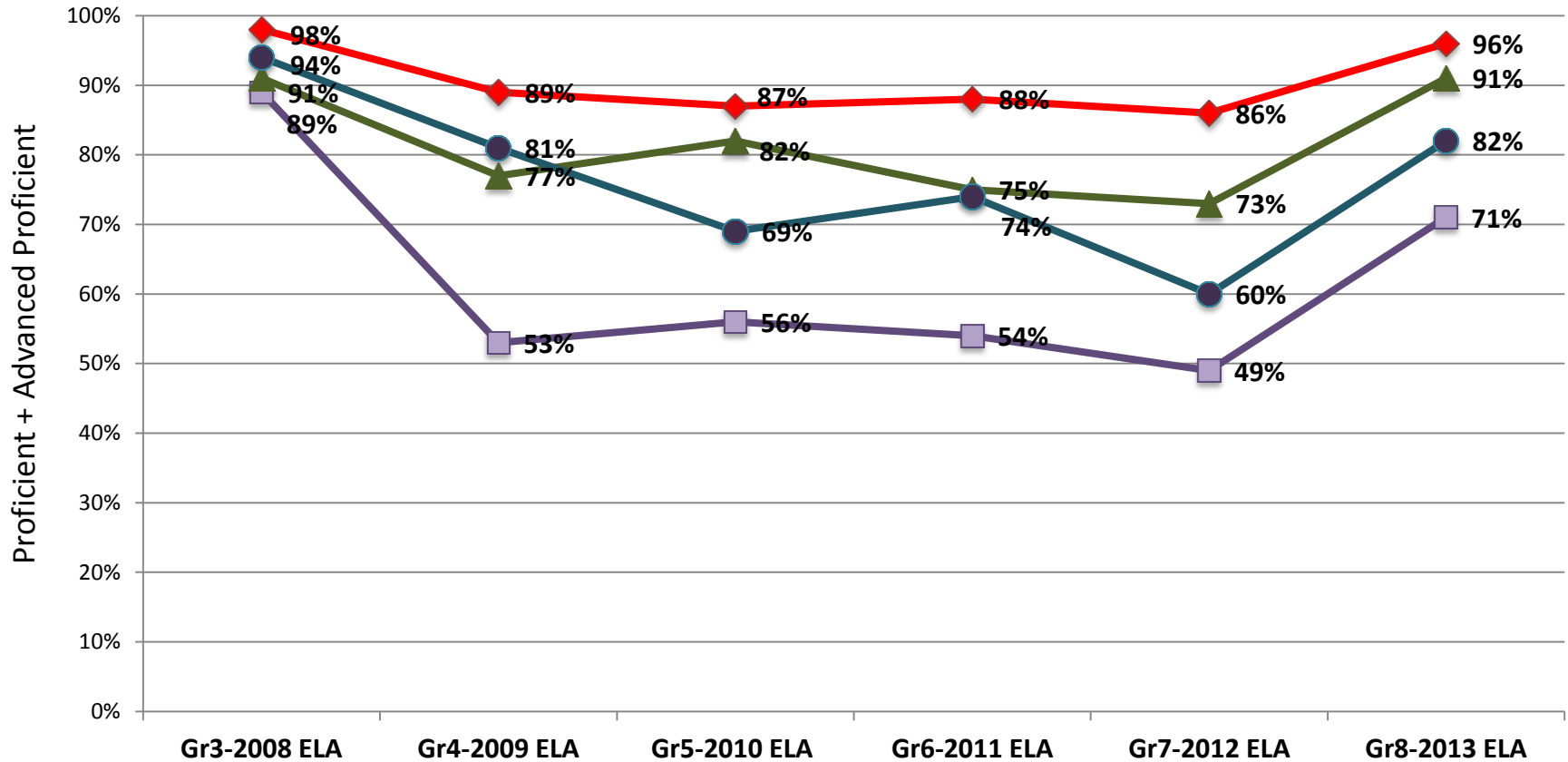
# Class of 2017 – ELA Groups

## Current 9<sup>th</sup> Graders



# Class of 2017 – ELA Eth/Race

## Current 9<sup>th</sup> Graders



Number of  
Valid Scores:

White (279,275,278,273,262,258)

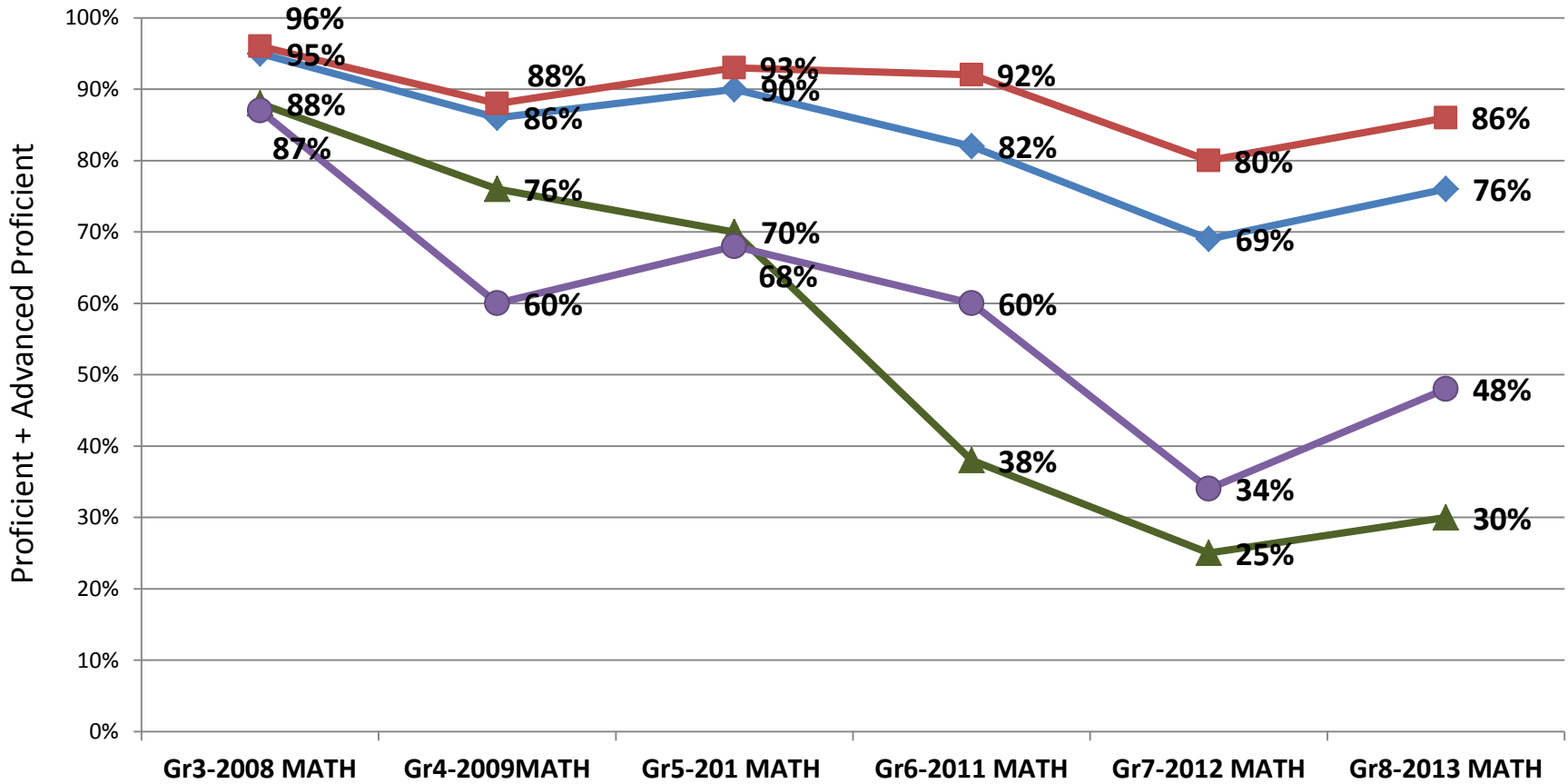
Asian (34, 31, 34, 35, 33, 11)

Afr Am (158,167,170,169,179,169)

Hisp (35, 36, 42, 39, 42, 44)

# Class of 2017 – MATH Groups

## Current 9<sup>th</sup> Graders



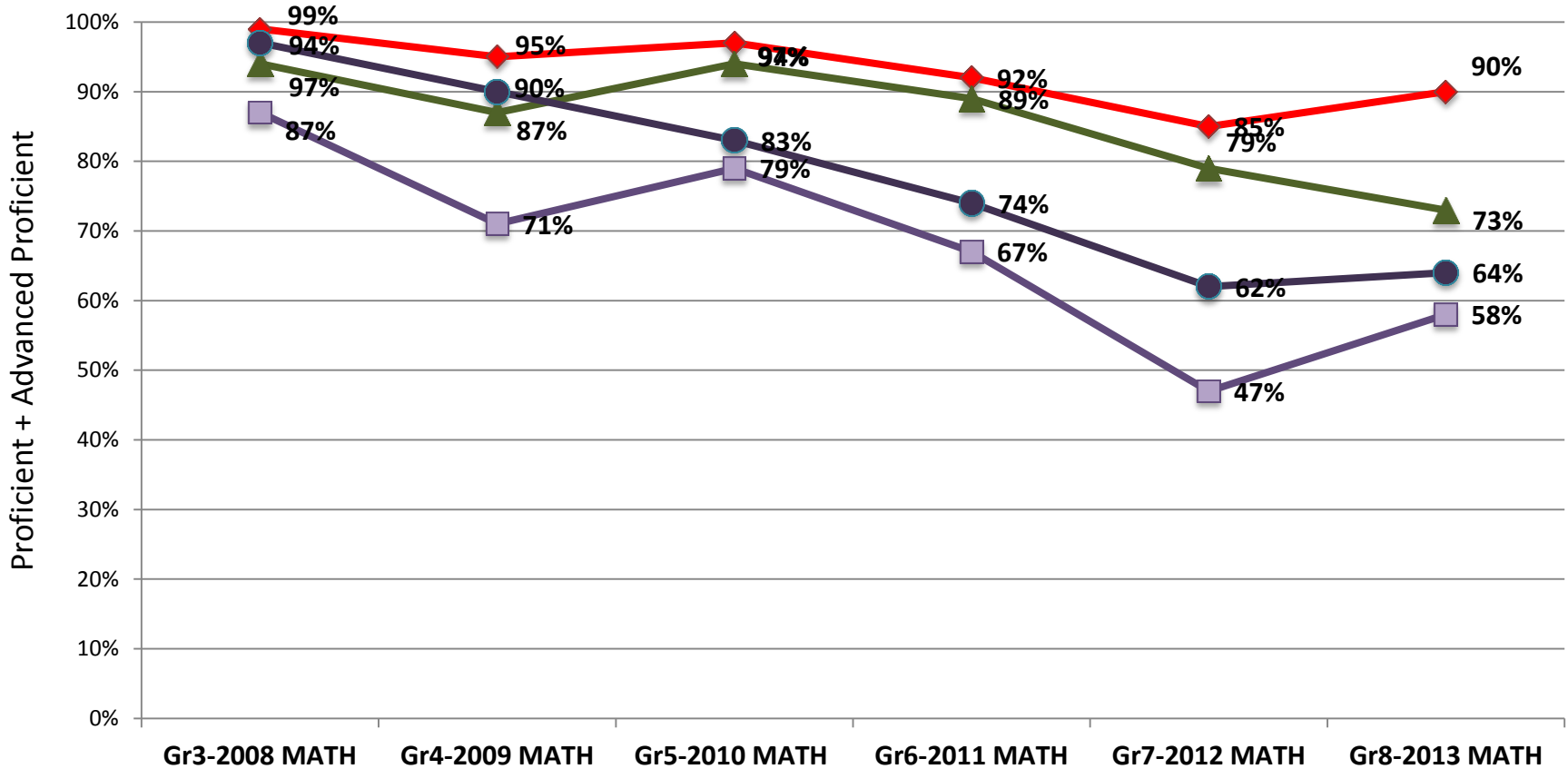
Number of  
Valid Scores:

◆ Total (511,513,527,522,522,512)  
▲ Sp Ed (73, 79, 83, 87, 88, 84)

■ Gen Ed (435,431,442,432,427,425)  
● Low SES (68, 62, 79, 92, 76, 86)

# Class of 2017 – MATH Eth/Race

## Current 9<sup>th</sup> Graders



Number of  
Valid Scores:

◆ White (280,277,278,273,264,258)

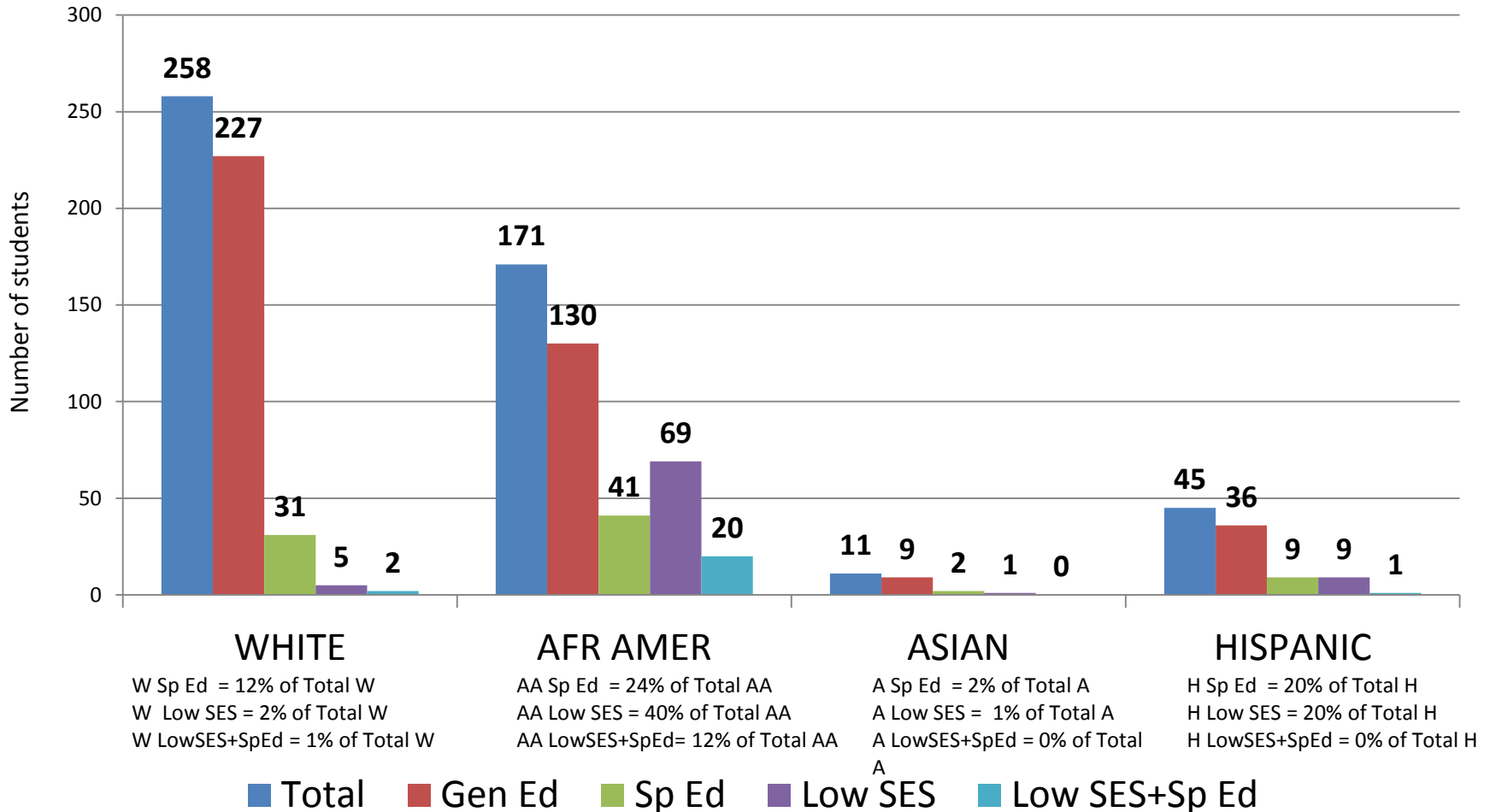
▲ Asian (34, 31, 34, 36, 33, 11)

■ Afr Am (159,167,170,171,180,169)

● Hisp (35, 36, 41, 39, 42, 44)

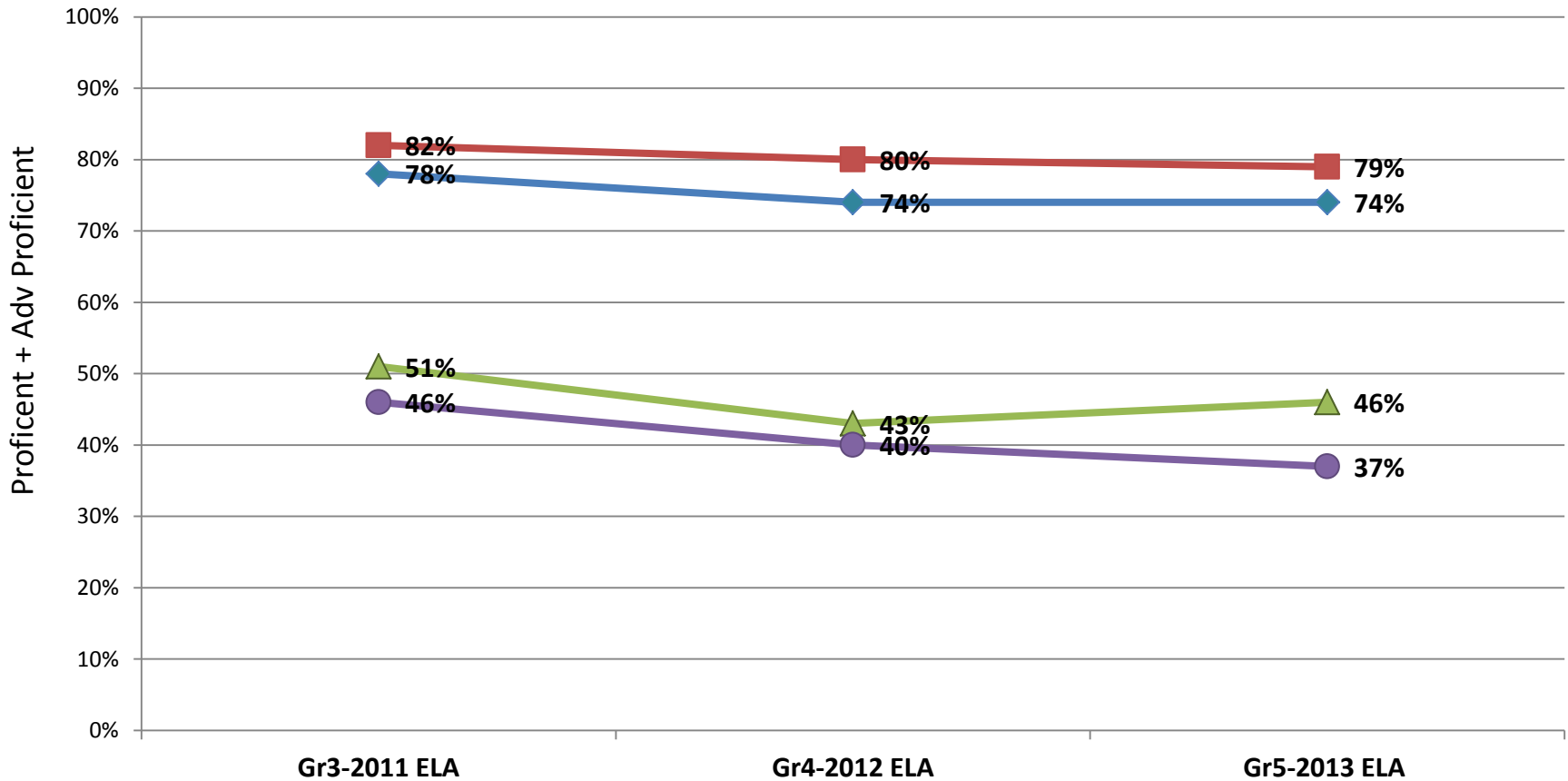
# Class of 2017 By Race/Group

## Current 9<sup>th</sup> Graders



# Class of 2020 – ELA Groups

## Current 6<sup>th</sup> Graders

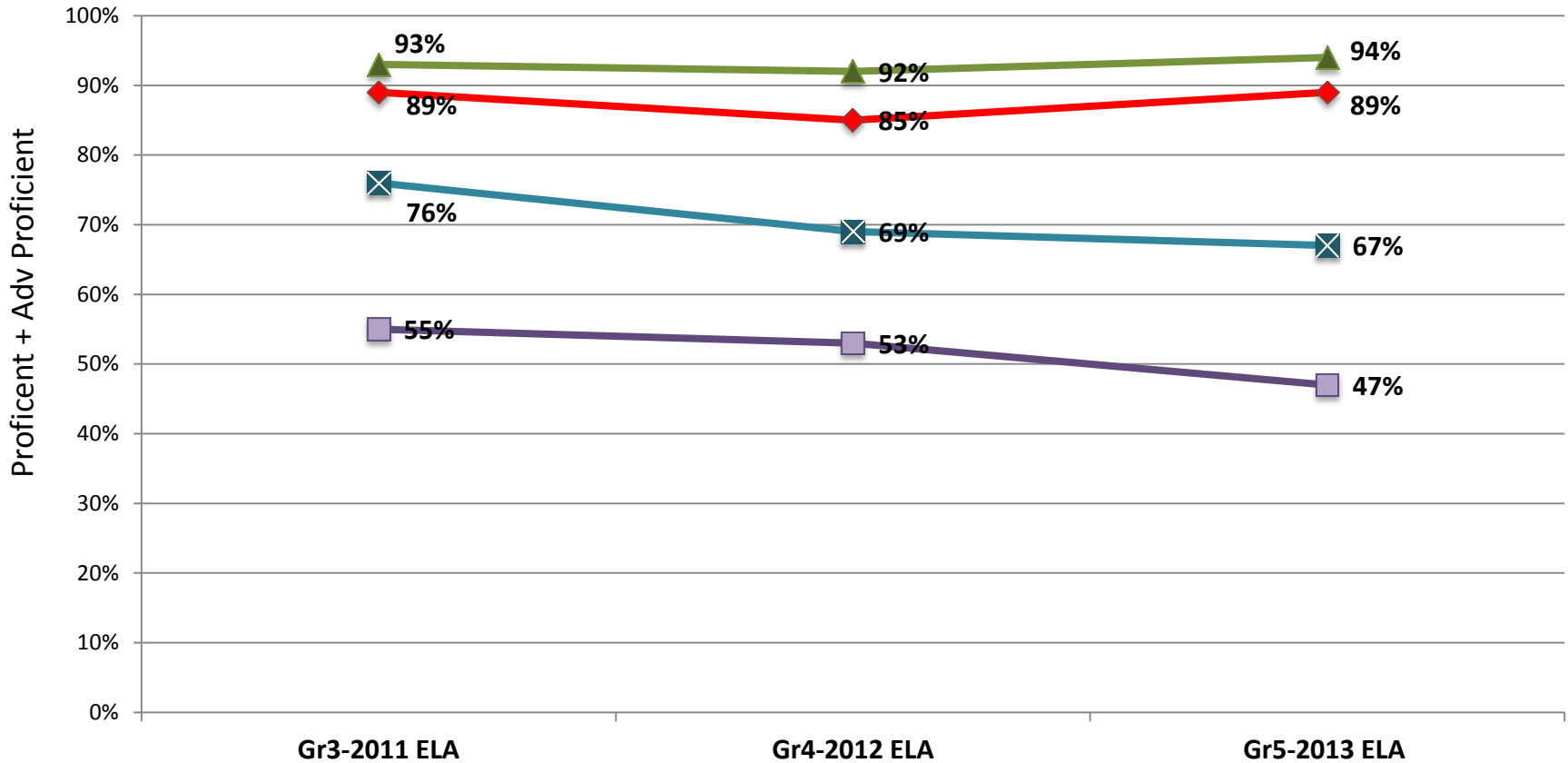


Number of Valid Scores:

◆ Total (516,526,528)   
 ■ Gen Ed (443,442,440)   
 ▲ Sp Ed (70, 82, 87)   
 ● Low SES (82, 58, 91)

# Class of 2020 – ELA Eth/Race

## Current 6<sup>th</sup> Graders

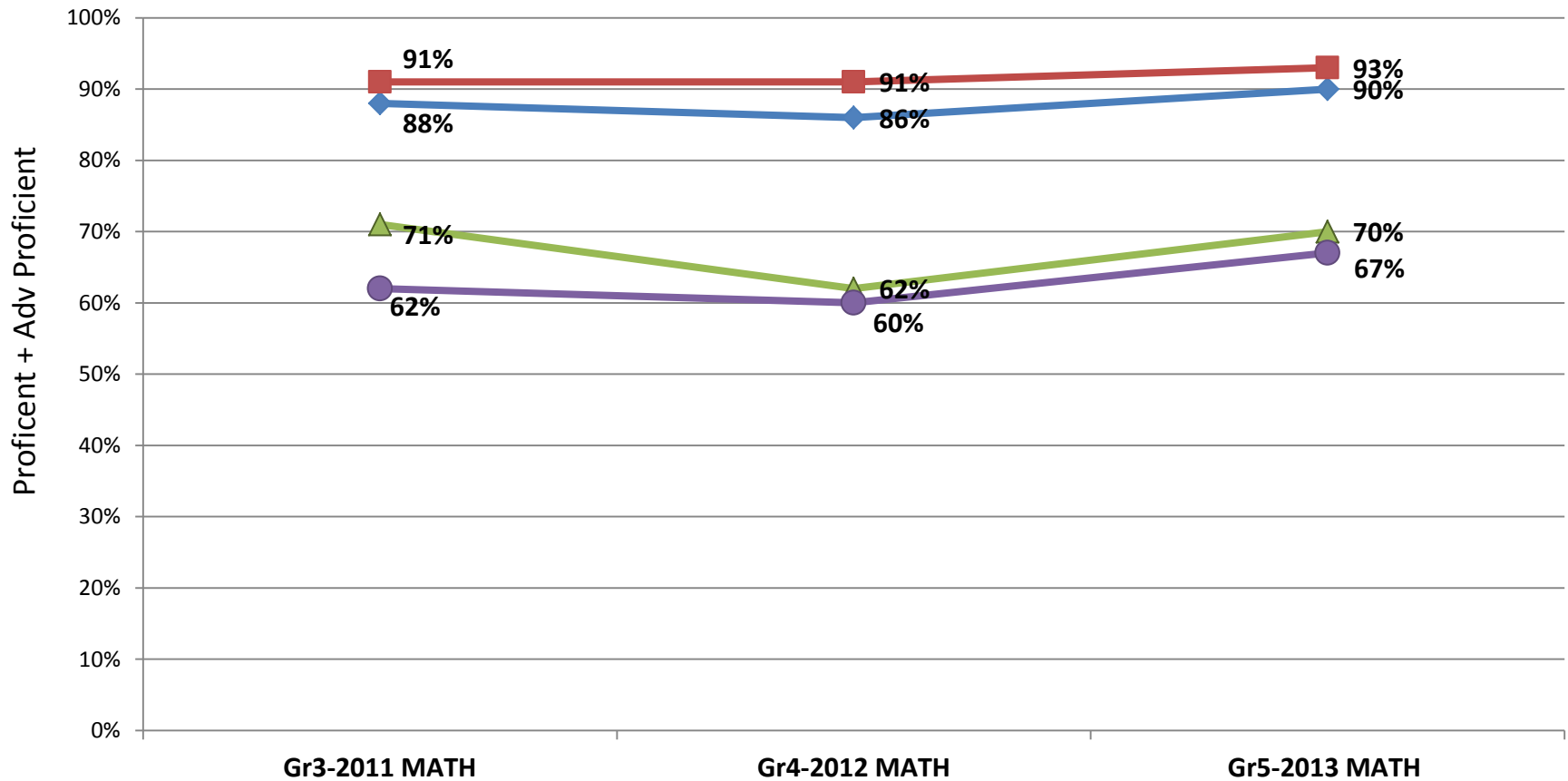


Number of Valid Scores:

◆ White (253,255,251) 
 ■ Afr Am (152,150,159) 
 ▲ Asian (47, 52, 47) 
 ⊠ Hisp (60, 66, 64)

# Class of 2020 – MATH Groups

## Current 6<sup>th</sup> Graders

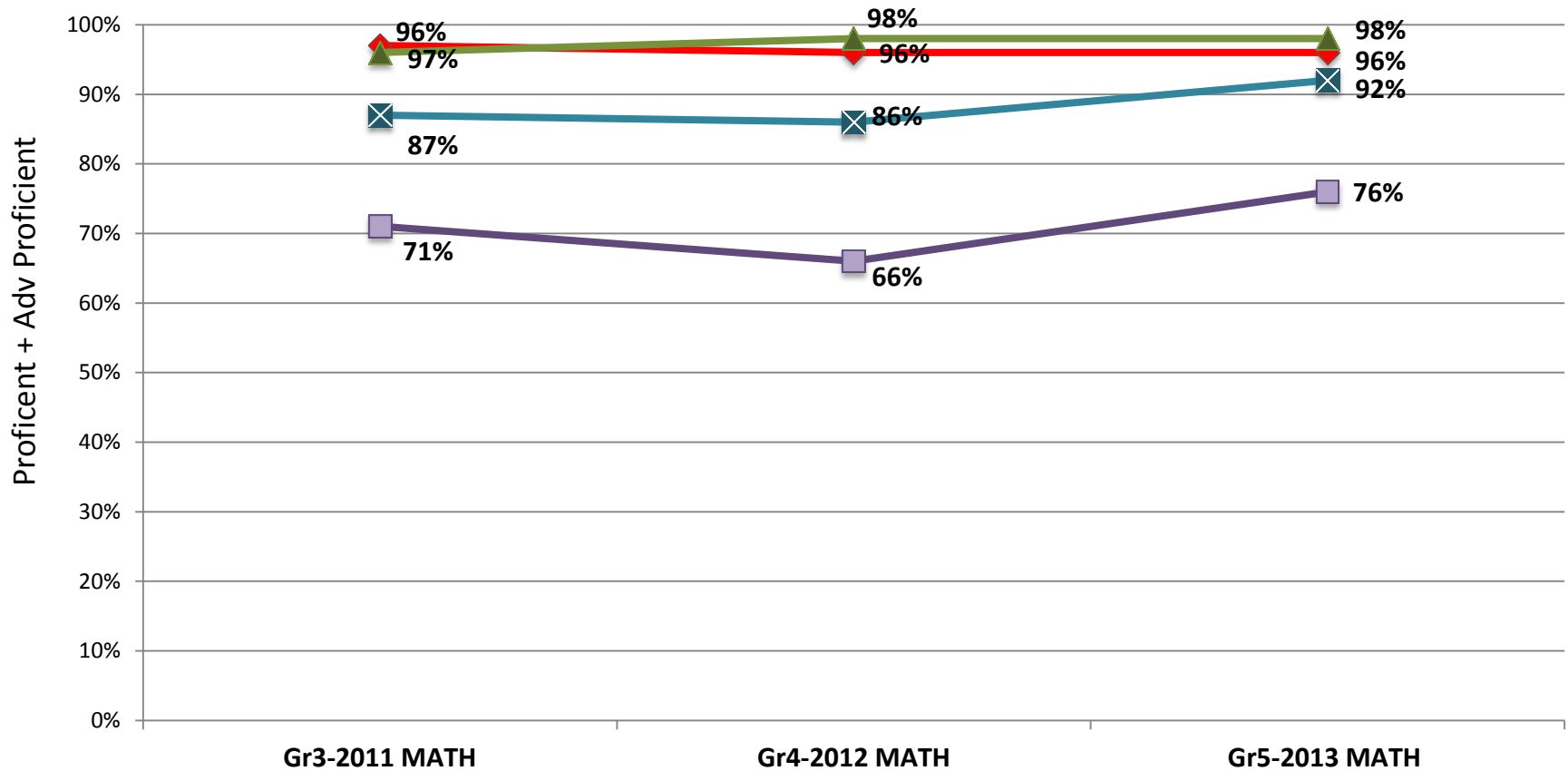


Number of Valid Scores:   
◆ Total (516,530,527)   
■ Gen Ed (443,444,440)   
▲ Sp Ed (70, 82, 86)   
● Low SES (82, 58, 91)



# Class of 2020 – MATH Eth/Race

## Current 6<sup>th</sup> Graders

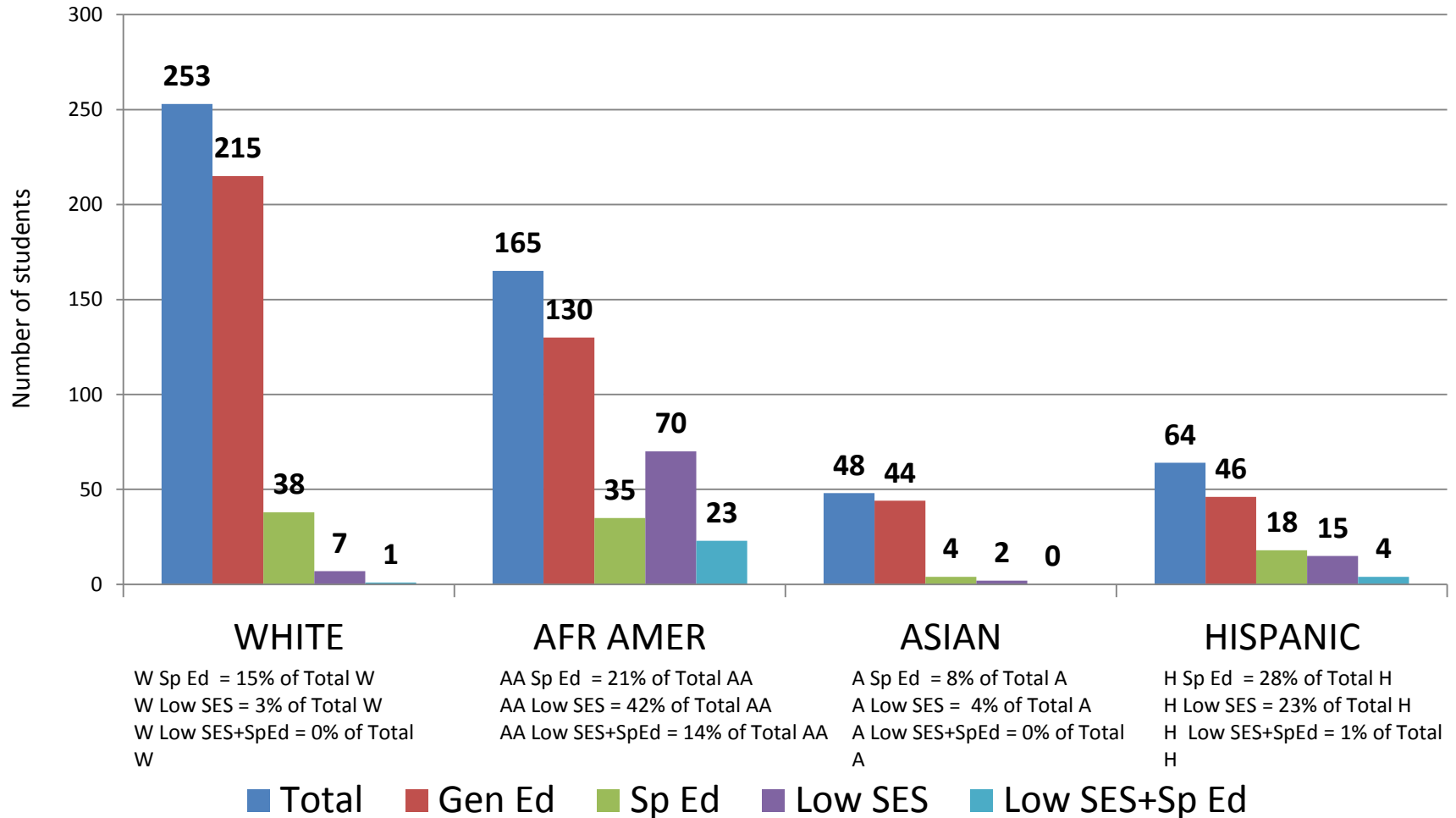


Number of  
Valid Scores:

◆ White (253,255,251) 
 ■ Afr Am (152,153,158) 
 ▲ Asian (47, 52, 47) 
 ⊠ Hisp (60, 66, 64)

# Class of 2020 By Race/Group

## Current 6<sup>th</sup> Graders



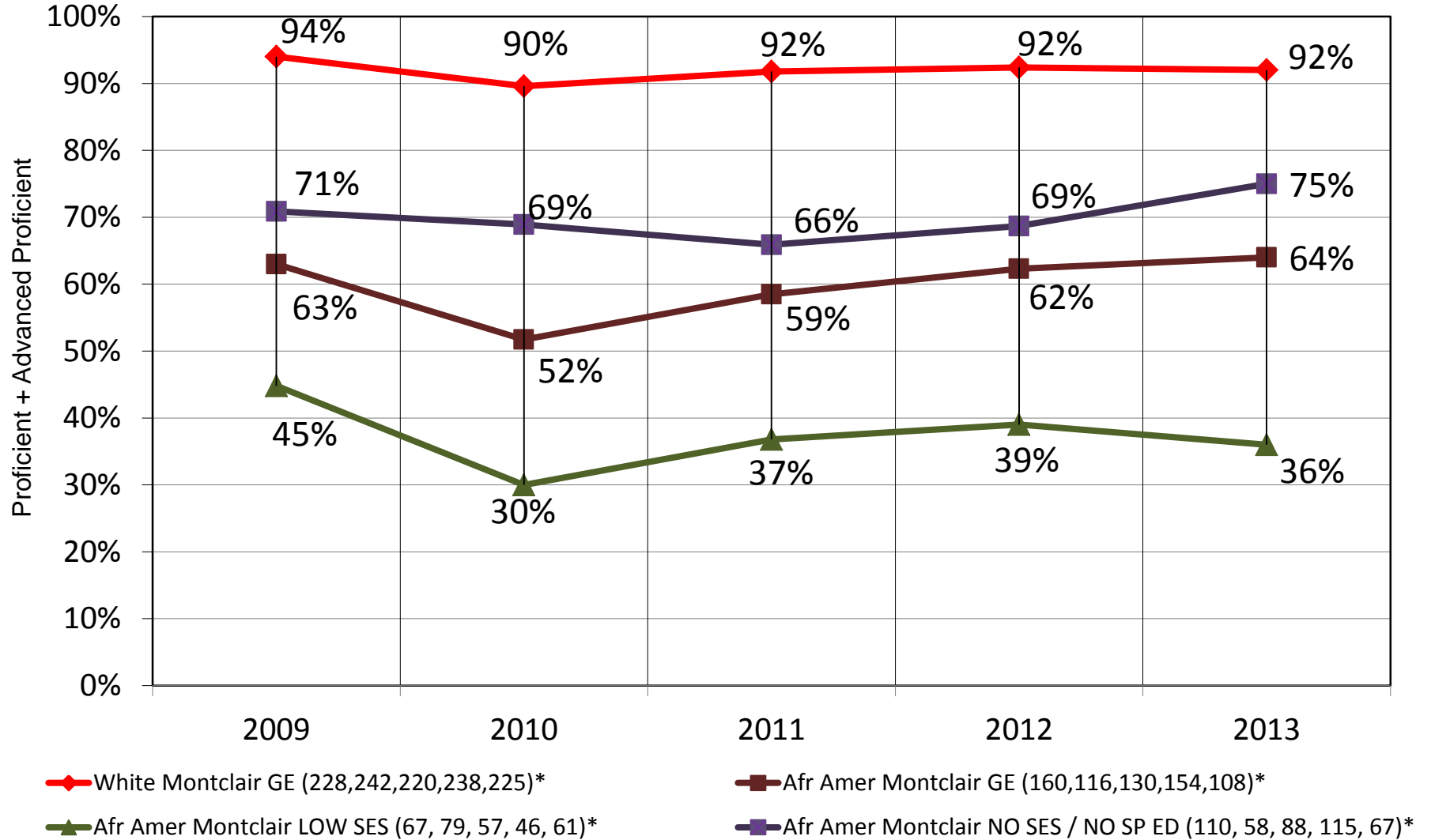
# African American Subgroups

The next 8 slides present data regarding students identified as:

- GEN ED (all students other than classified students)
- LOW SES (students qualifying for free or reduced lunch)
- NO SES / NO SP ED (all students other than classified students and students qualifying for free or reduced lunch)

# W / AA : 2009-12

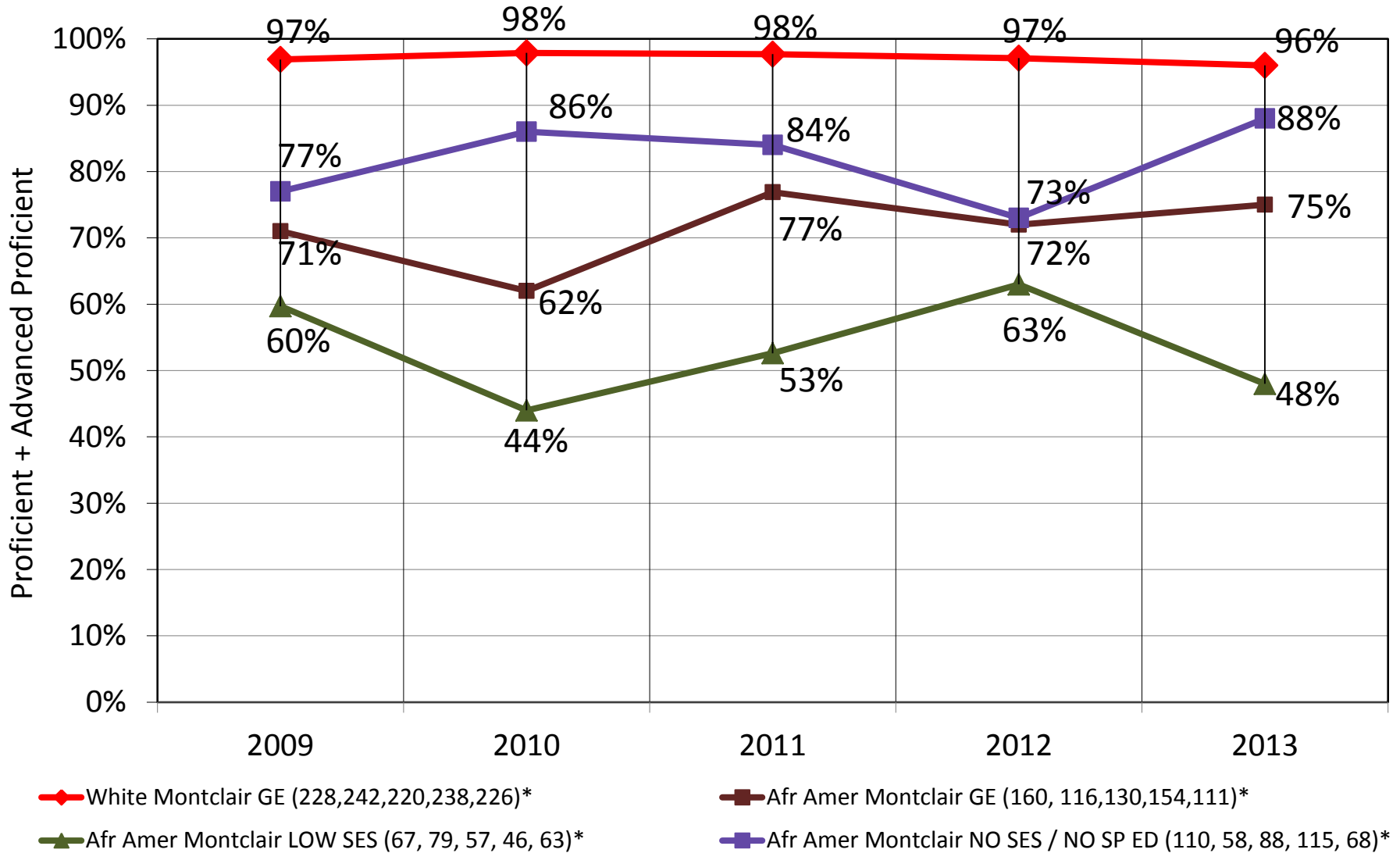
## NJ ASK 3 LAL Prof/AdvProf



\* No. of Valid Scores by year

# W / AA: 2009-12

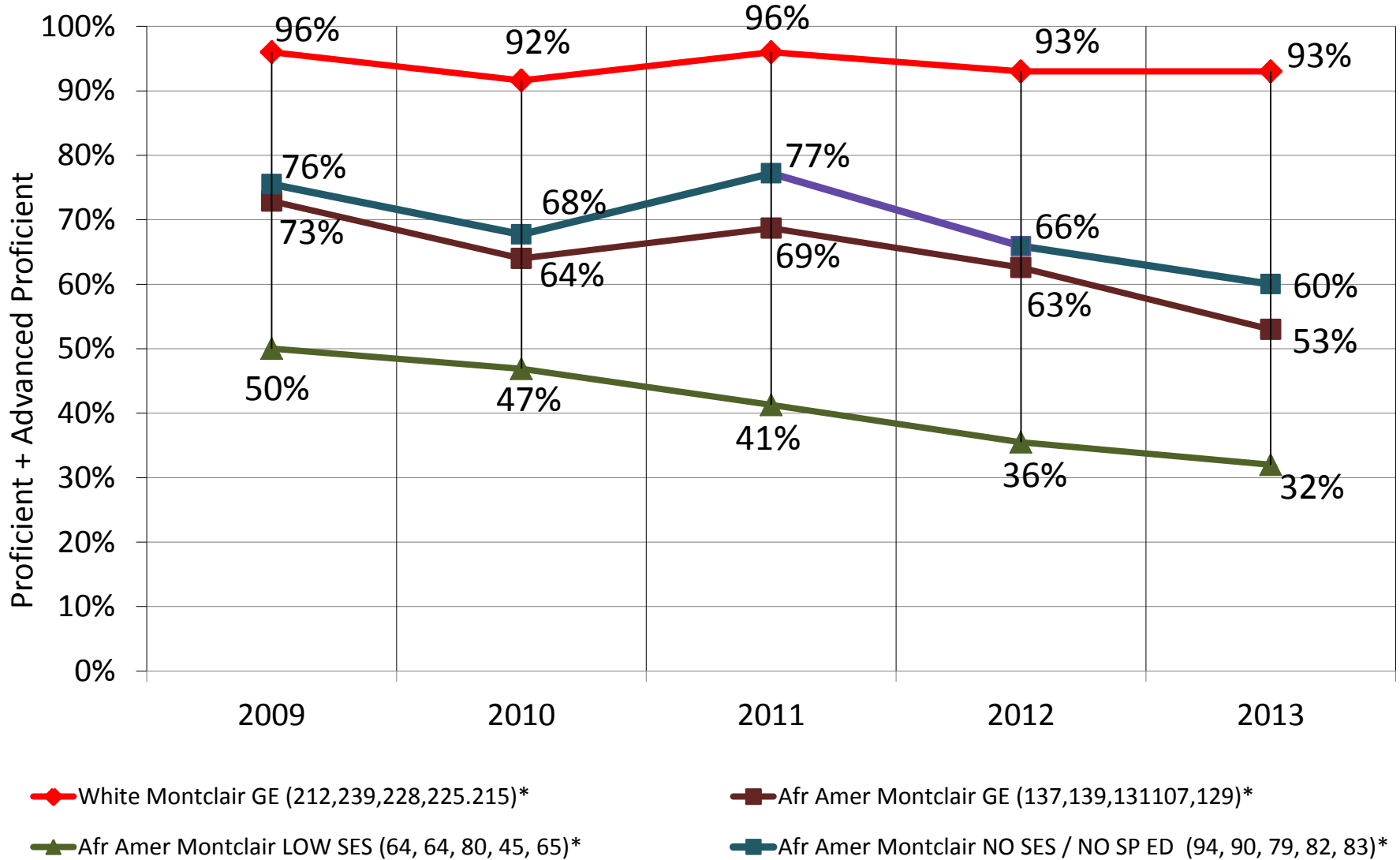
## NJ ASK 3 MATH Prof/AdvProf



\* No. of Valid Scores by year

# W / AA: 2009-12

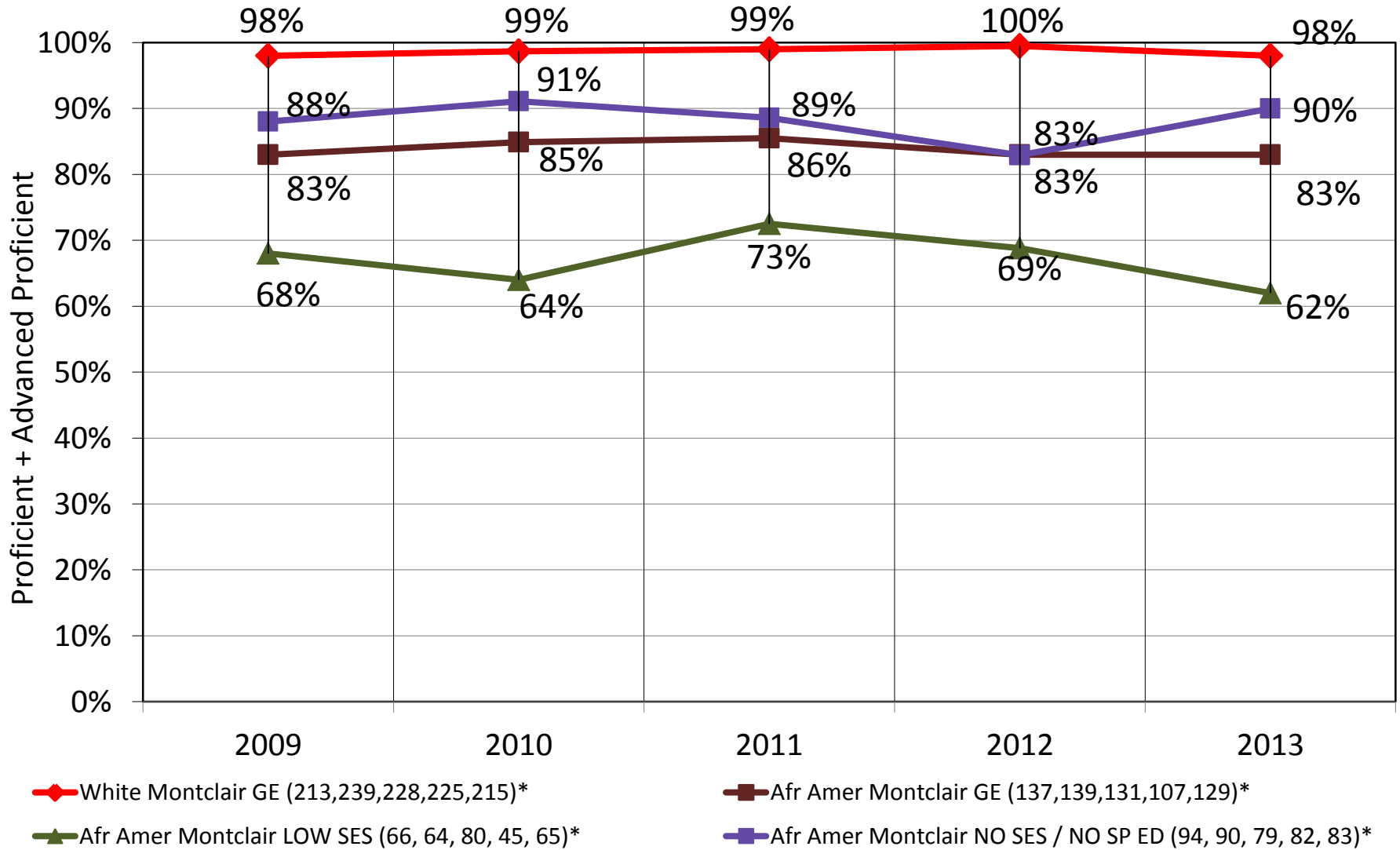
## NJ ASK 5 LAL Prof/AdvProf



\* No. of Valid Scores by year

# W / AA: 2009-12

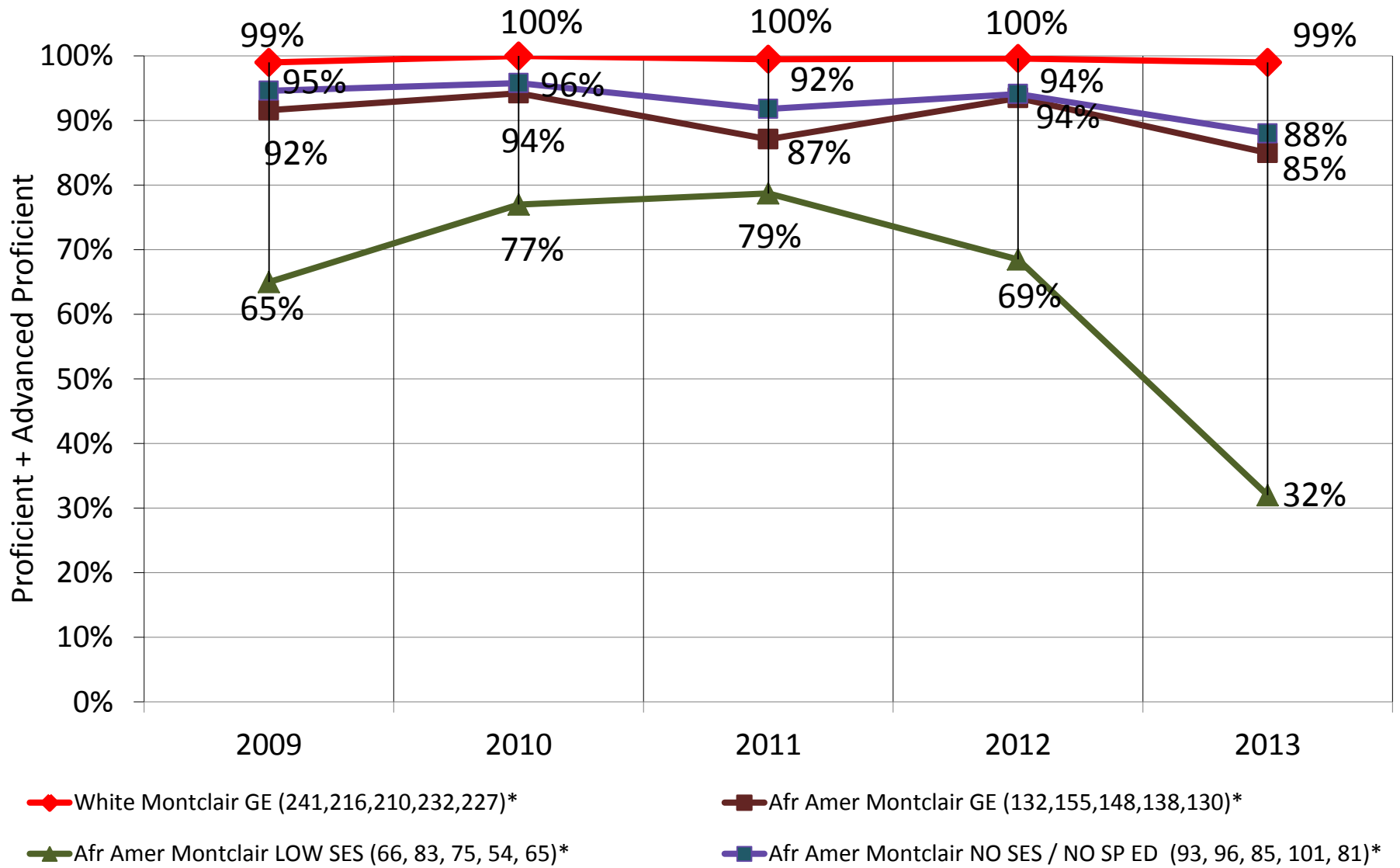
## NJ ASK 5 MATH Prof/AdvProf



\* No. of Valid Scores by year

# W / AA: 2009-12

## NJ ASK 8 LAL Prof/AdvProf

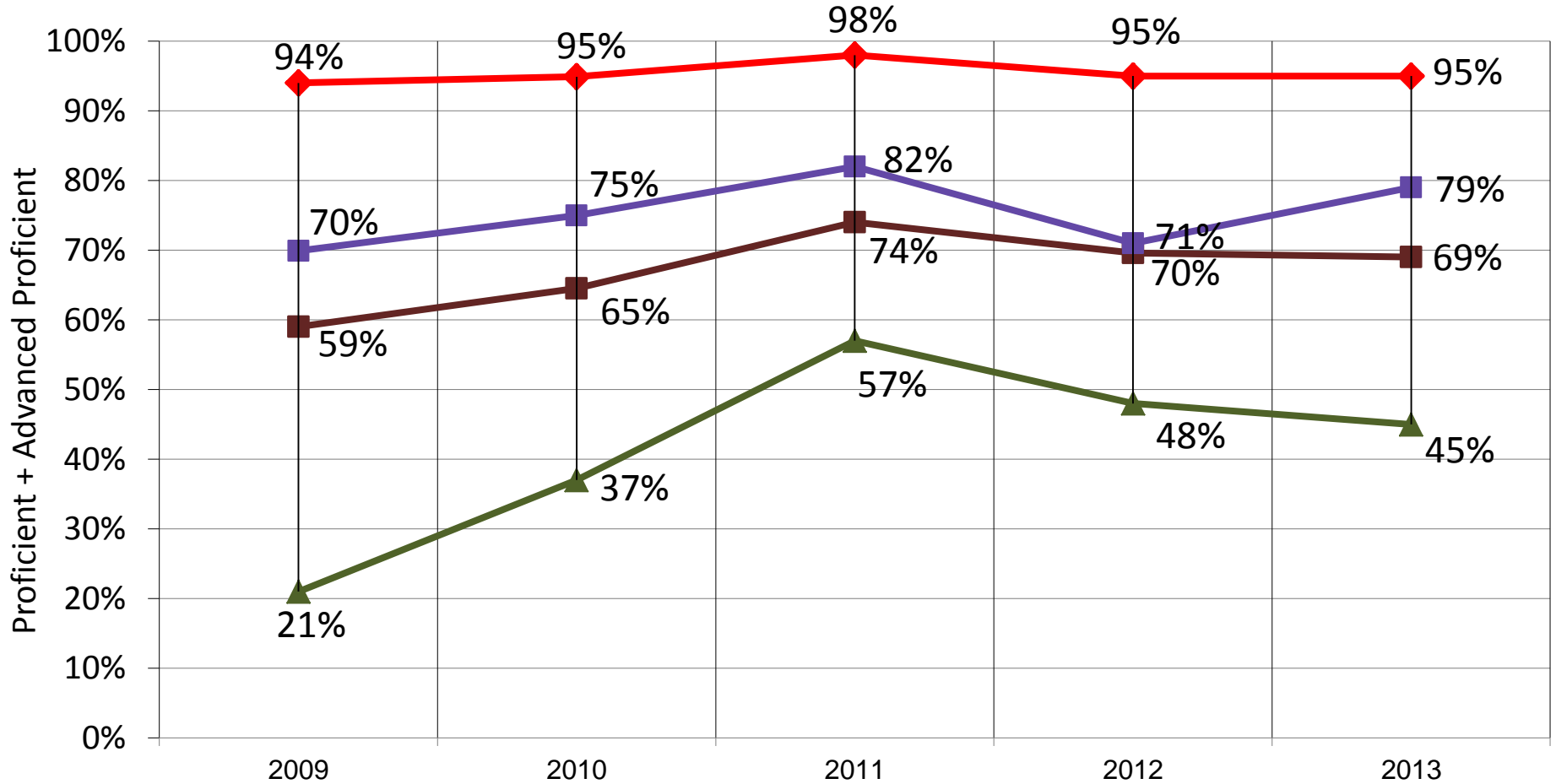


\* No. of Valid Scores by year



# W / AA: 2009-12

## NJ ASK 8 MATH Prof/AdvProf



White Montclair GE (241,216,210,232,227)\*

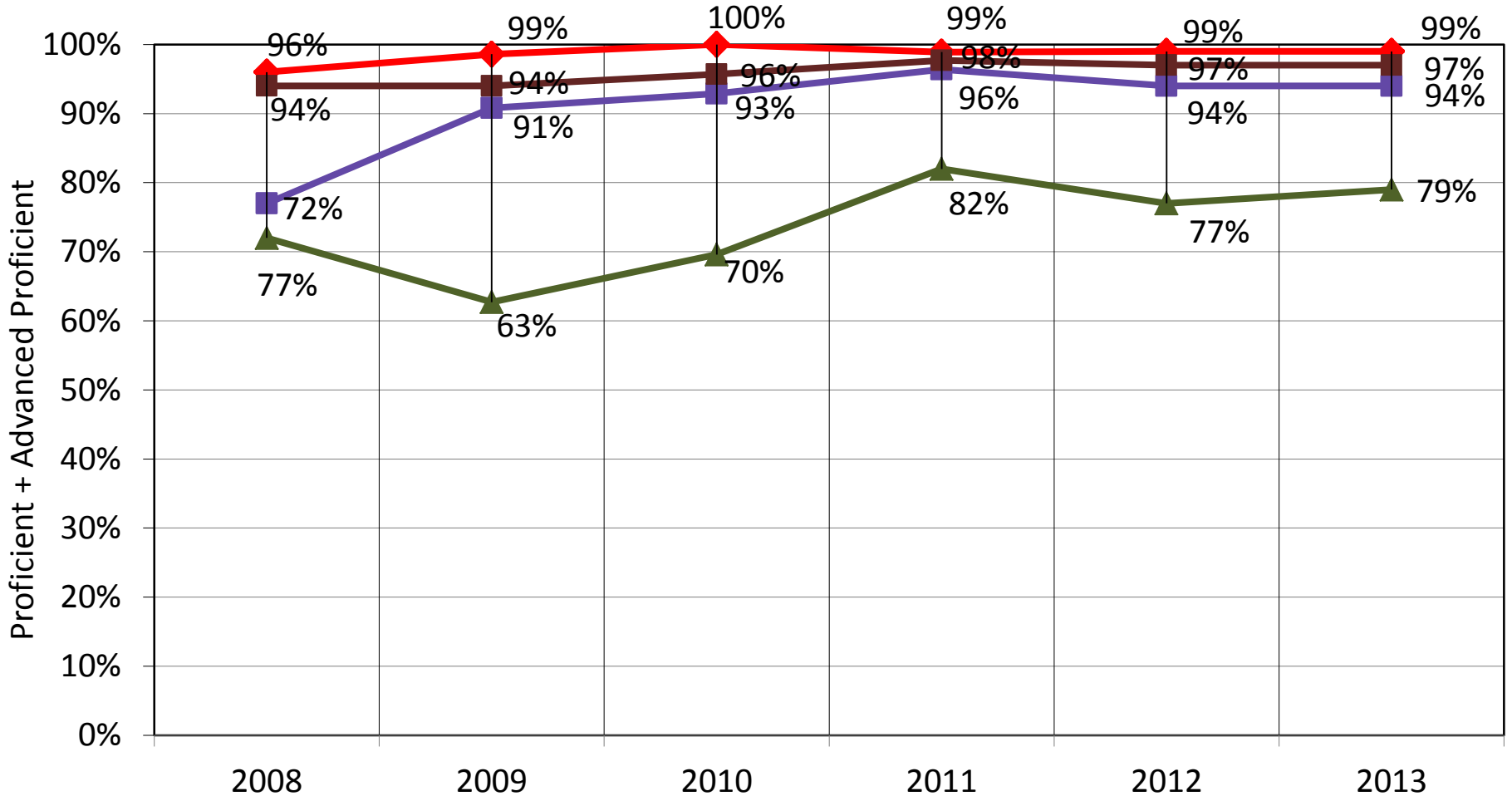
Afr Amer Montclair GE (137,155,148,138,130)\*

Afr Amer Montclair LOW SES (66, 83, 75, 54, 67)\*

Afr Amer Montclair NO SES / NO SP ED (93, 96, 85, 101, 81)\*

# W / AA: 2009-13

## NJ HSPA 11 LAL Prof/AdvProf



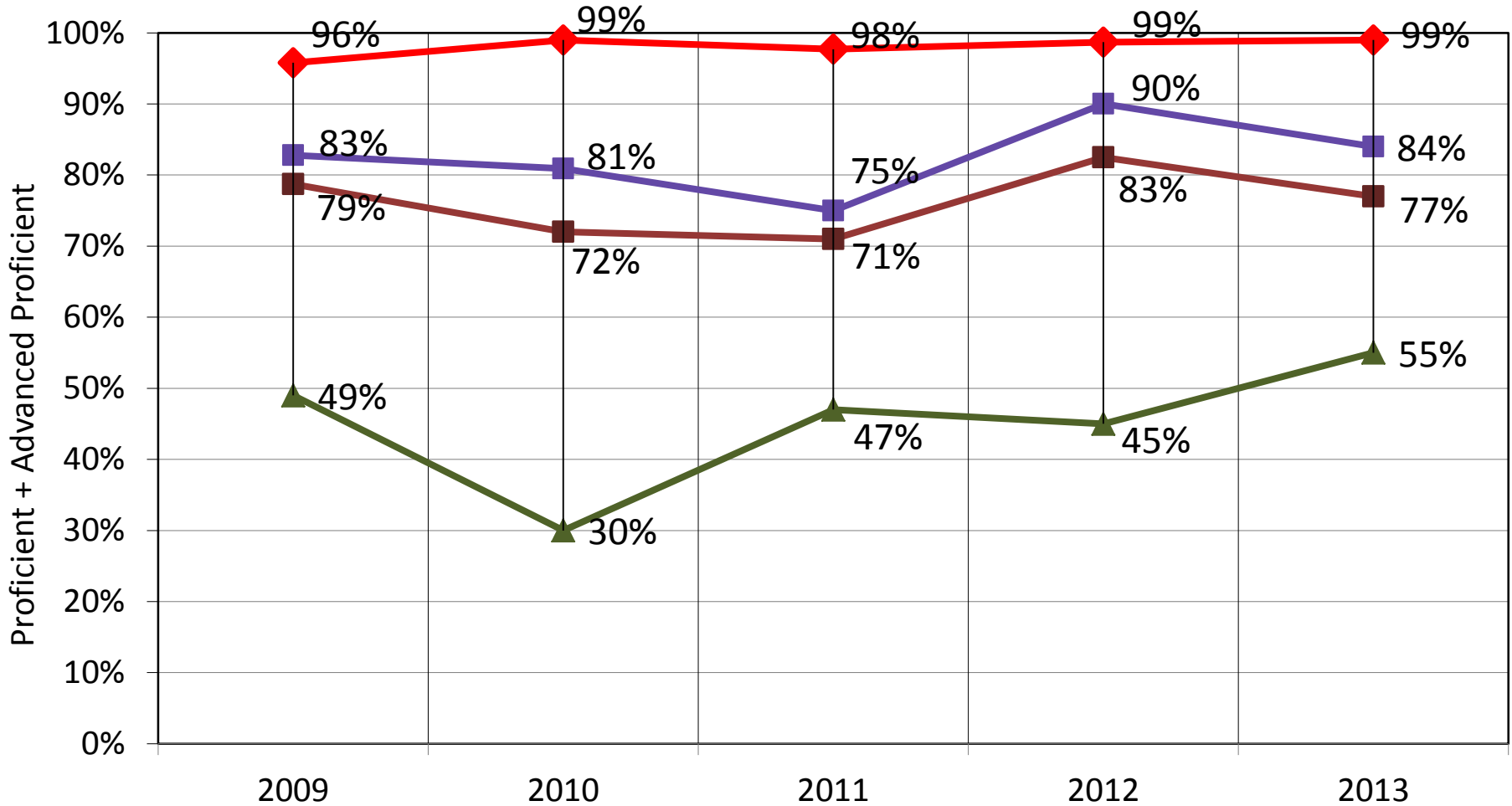
White Montclair GE (216, 215, 197, 233,207)\*  
 Afr Amer Montclair LOW SES (51, 56, 85, 55, 86)\*

Afr Amer Montclair GE (141, 127, 140, 126,157)\*  
 Afr Amer Montclair NO SES / NO SP ED (105, 94, 88, 92, 91)\*

\* No. of Valid Scores by year

# W / AA: 2009-13

## NJ HSPA 11 MATH Prof/AdvProf



◆ White Montclair GE (216, 215, 197, 233, 207)\*

■ Afr Amer Montclair GE (141, 127, 140, 126, 157)\*

▲ Afr Amer Montclair LOW SES (51, 56, 85, 55, 86)\*

■ Afr Amer Montclair NO SES / NO SP ED (105, 94, 88, 92, 91)\*

SAT and Advanced Placement (AP)  
Results  
2011-12 & 2012-13

# SAT and Advanced Placement (AP) Results 2011-2012 and 2012-2013

College and Career Readiness Indicators	MHS 2011-12	MHS 2012-13
Percent of students participating in <b>SAT</b>	<b>91%</b>	<b>91%</b>
Percent of students scoring above 1550 on <b>SAT</b>	<b>55%</b>	<b>59%</b>
Percent of Students taking one or more <b>AP</b> course	<b>57.8%</b>	<b>56.6%</b>
Percent of students taking one more <b>AP</b> test	<b>27.4%</b>	<b>28.7%</b>
Percent of students scoring a 3 or better on <b>AP</b> tests	<b>84.3%</b>	<b>84.6%</b>

Academic Achievement  
Montclair V. State (in percentiles)  
2011-12 & 2012-13

# 2013 Academic Achievement Montclair v. State (in percentiles)

SCHOOL	11-12	12-13	CHANGE(+/-)
MHS	43	40	-3
GLENFIELD	67	68	1
MT HEBRON	52	45	-7
RENAISSANCE	73	76	3
BRADFORD	78	84	6
BULLOCK	38	42	4
EDGEMONT	56	47	-9
HILLSIDE	49	57	8
NORTHEAST	48	52	4
WATCHUNG	97	94	-3
District Average	60 <sup>th</sup> Percentile	61 <sup>st</sup> Percentile	+4

**Very High Performance** is defined as being equal to or above the 80<sup>th</sup> percentile.  
**High Performance** is defined as being between the 60<sup>th</sup> and 79.9<sup>th</sup> percentiles.  
**Average Performance** is defined as being between the 40<sup>th</sup> and 59.9<sup>th</sup> percentiles.  
**Average Performance** is defined as being between the 40<sup>th</sup> and 59.9<sup>th</sup> percentiles.  
**Lagging Performance** is defined as being between the 20<sup>th</sup> and 39.9<sup>th</sup> percentiles.  
**Significantly Lagging Performance** is defined as being equal to or below the 19.9<sup>th</sup> percentile.

2011-12 & 2012-13 Growth  
Montclair v. State (in percentiles)



# 2011-12 & 2012-13 Growth Montclair v. State (in percentiles)

SCHOOL	11-12	12-13	CHANGE(+/-)
GLENFIELD	46	39	-7
MT HEBRON	31	31	0
RENAISSANCE	32	35	3
BRADFORD	67	66	-1
<b>BULLOCK</b>	<b>35</b>	<b>74</b>	<b>39</b>
EDGEMONT	55	42	-13
<b>HILLSIDE</b>	<b>53</b>	<b>68</b>	<b>15</b>
<b>NORTHEAST</b>	<b>51</b>	<b>76</b>	<b>25</b>
WATCHUNG	58	65	7
District Average	48 <sup>th</sup> percentile	<b>55<sup>th</sup> percentile (Avg)</b>	

**Very High Performance** is defined as being equal to or above the 80<sup>th</sup> percentile.

**High Performance** is defined as being between the 60<sup>th</sup> and 79.9<sup>th</sup> percentiles.

**Average Performance** is defined as being between the 40<sup>th</sup> and 59.9<sup>th</sup> percentiles.

**Average Performance** is defined as being between the 40<sup>th</sup> and 59.9<sup>th</sup> percentiles.

**Lagging Performance** is defined as being between the 20<sup>th</sup> and 39.9<sup>th</sup> percentiles.

**Significantly Lagging Performance** is defined as being equal to or below the 19.9<sup>th</sup> percentile.

# Growth & Proficiency Levels

# Elementary Growth by Proficiency Level

**14%** of Montclair elementary students are **advanced proficient** in **ELA**  
**100%** grew at a **typical/high** level compared to advanced proficient students in NJ

**60%** of Montclair elementary students are **proficient** in **ELA**  
**73%** grew at a **typical/high** level compared to proficient students in NJ

**26%** of Montclair elementary students are **partially proficient** in **ELA**  
**42%** grew at a **typical/high** level compared to partially proficient students in NJ

---

**54%** of Montclair elementary students are **advanced proficient** in **MATH**  
**81%** grew at a **typical/high** level compared to advanced proficient students in NJ

**34%** of Montclair elementary students are **proficient** in **MATH**  
**63%** grew at a **typical/high** level compared to proficient students in NJ

**12%** of Montclair elementary students are **partially proficient** in **MATH**  
**43%** grew at a **typical/high** level compared to partially proficient students in NJ

# Middle School Growth by Proficiency Level

16% of Montclair middle school students are **advanced proficient** in **ELA**

88% grew at a **typical/high** level compared to advanced proficient students in NJ

65% of Montclair middle school students are **proficient** in **ELA**

64% grew at a **typical/high** level compared to proficient students in NJ

20% of Montclair middle school students are **partially proficient** in **ELA**

38% grew at a **typical/high** level compared to partially proficient students in NJ

---

38% of Montclair middle school students are **advanced proficient** in **MATH**

74% grew at a **typical/high** level compared to advanced proficient students in NJ

40% of Montclair middle school students are **proficient** in **MATH**

56% grew at a **typical/high** level compared to proficient students in NJ

23% of Montclair middle school students are **partially proficient** in **MATH**

37% grew at a **typical/high** level compared to partially proficient students in NJ

# APPENDIX

# 2013 Elem Growth: Adv Proficient

ELA

SCHOOL	LOW %	TYPICAL %	HIGH %	TOTAL %
BRADFORD	0	4	14	18
BULLOCK	0	1	9	10
EDGEMONT	0	1	5	6
HILLSIDE	0	2	13	15
NORTHEAST	0	0	11	11
WATCHUNG	1	2	21	24
AVERAGE:	<b>0%</b>	<b>2%</b>	<b>12%</b>	<b>14%</b>

On average, 14% of Montclair elementary students are advanced proficient in ELA. Of these, 100% grew at a typical or high level. 0% grew at low level.

MATH

BRADFORD	19	15	27	61
BULLOCK	9	10	24	43
EDGEMONT	3	13	26	42
HILLSIDE	8	12	33	53
NORTHEAST	9	13	35	57
WATCHUNG	14	19	34	67
AVERAGE:	<b>10%</b>	<b>14%</b>	<b>30%</b>	<b>54%</b>

On average, 54% of Montclair elementary students are advanced proficient in MATH. Of these, 81% grew at a typical or high level. 19% grew at a low level.

# 2013 Elem Growth: Proficient

**ELA**

SCHOOL	LOW %	TYPICAL %	HIGH %	TOTAL %
BRADFORD	16	20	27	63
BULLOCK	12	16	28	56
EDGEMONT	22	19	22	63
HILLSIDE	17	21	20	58
NORTHEAST	14	17	26	57
WATCHUNG	17	25	21	63
<b>AVERAGE:</b>	<b>16%</b>	<b>20%</b>	<b>24%</b>	<b>60%</b>

On average, 60% of Montclair elementary students are proficient in ELA. Of these, 73% grew at a typical or high level. 27% grew at a low level.

**MATH**

BRADFORD	14	14	5	33
BULLOCK	8	11	18	37
EDGEMONT	16	16	11	43
HILLSIDE	11	14	11	36
NORTHEAST	12	8	9	29
WATCHUNG	14	7	5	26
<b>AVERAGE:</b>	<b>13%</b>	<b>12%</b>	<b>10%</b>	<b>34%</b>

On average, 34% of Montclair elementary students are proficient in MATH. Of these, 65% grew at a typical or high level. 38% grew at a low level.

# 2013 Elem Growth: Partially Proficient

**ELA**

SCHOOL	LOW %	TYPICAL %	HIGH %	TOTAL %
BRADFORD	12	4	2	18
BULLOCK	21	9	3	33
EDGEMONT	21	11	5	31
HILLSIDE	14	10	3	27
NORTHEAST	18	7	8	33
WATCHUNG	10	2	1	13
<b>AVERAGE:</b>	<b>15%</b>	<b>7%</b>	<b>4%</b>	<b>26%</b>

On average, 26% of Montclair elementary students are partially proficient in ELA. Of these, 42% grew at a typical or high level. 58% grew at a low level.

**MATH**

BRADFORD	4	1	0	5
BULLOCK	12	4	3	19
EDGEMONT	12	3	1	16
HILLSIDE	6	2	3	11
NORTHEAST	8	4	1	13
WATCHUNG	5	1	1	7
<b>AVERAGE:</b>	<b>8%</b>	<b>3%</b>	<b>2%</b>	<b>12%</b>

On average, 12% of Montclair elementary students are partially proficient in MATH. Of these, 42% grew at a typical or high level. 67% grew at a low level.



# 2013 Middle School Growth: Advanced Proficient

**ELA**

SCHOOL	LOW %	TYPICAL %	HIGH %	TOTAL %
GLENFIELD	1	5	12	18
MT HEBRON	1	2	10	13
RENAISSANCE	3	4	9	16
<b>AVERAGE:</b>	<b>2%</b>	<b>4%</b>	<b>10%</b>	<b>16%</b>

On average, 16% of Montclair middle school students are advanced proficient in ELA. Of these, 88% grew at a typical or high level. 13% grew at low level.

**MATH**

GLENFIELD	9	14	18	41
MT HEBRON	8	6	16	30
RENAISSANCE	12	11	19	42
<b>AVERAGE:</b>	<b>10%</b>	<b>10%</b>	<b>18%</b>	<b>38%</b>

On average, 38% of Montclair middle school students are advanced proficient in MATH. Of these, 74% grew at a typical or high level. 26% grew at a low level.

# 2013 Middle School Growth: Proficient

**ELA**

SCHOOL	LOW %	TYPICAL %	HIGH %	TOTAL %
GLENFIELD	25	24	19	68
MT HEBRON	20	19	20	59
RENAISSANCE	25	23	19	67
AVERAGE:	<b>23%</b>	<b>22%</b>	<b>19%</b>	<b>65%</b>

On average, 65% of Montclair middle school students are proficient in ELA. Of these, 63% grew at a typical or high level. 35% grew at a low level.

**MATH**

GLENFIELD	20	13	7	40
MT HEBRON	16	16	8	40
RENAISSANCE	16	12	11	39
AVERAGE:	<b>17%</b>	<b>14%</b>	<b>9%</b>	<b>40%</b>

On average, 40% of Montclair middle school students are proficient in MATH. Of these, 58% grew at a typical or high level. 43% grew at a low level.

# 2013 Middle School Growth: Partially Proficient

**ELA**

SCHOOL	LOW %	TYPICAL %	HIGH %	TOTAL %
GLENFIELD	10	3	1	14
MT HEBRON	18	7	3	28
RENAISSANCE	9	7	1	17
<b>AVERAGE:</b>	<b>12%</b>	<b>6%</b>	<b>2%</b>	<b>20%</b>

On average, 20% of Montclair middle school students are partially proficient in ELA. Of these, 40% grew at a typical or high level. 60% grew at low level.

**MATH**

GLENFIELD	11	5	2	18
MT HEBRON	20	8	3	31
RENAISSANCE	12	4	3	19
<b>AVERAGE:</b>	<b>14%</b>	<b>6%</b>	<b>3%</b>	<b>23%</b>

On average, 23% of Montclair middle school students are partially proficient in MATH. Of these, 39% grew at a typical or high level. 61% grew at a low level.